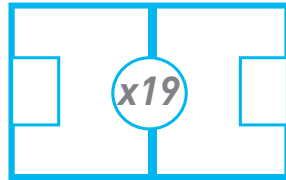


TATE & LYLE

Koog aan de Zaan, the Netherlands Plant Summary

Lagendijk 5, 1541 KA,
Postbus 170, 1540 AD,
Koog aan de Zaan,
the Netherlands
+31(0) 7565 321 11

Size equivalent to:

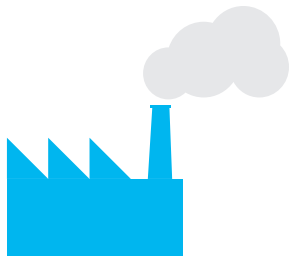
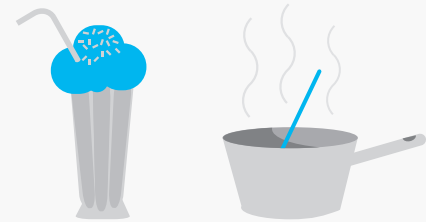


Production facility
Established 1867

Plant Manager: Paul Clarijs

INGREDIENTS PRODUCED

- Speciality starches
- Native, modified and clean-label starches
- CLARIA® Functional Clean-Label Starches
- Maize and tapioca
- PROMITOR® Soluble Fibre
- STA-LITE® Polydextrose
- MULTIVANTAGE® Syrup
- Corn syrups
- Starches for the paper and board industries
- Corn co-products, inc. animal feed



Tate & Lyle's oldest
starch production facility



employees



Delivered by barge for
processing



First
and only STA-LITE®
Polydextrose line in
Europe