

TATE & LYLE

Koog aan de Zaan, the Netherlands Plant Summary

Lagendijk 5, 1541 KA,
Postbus 170, 1540 AD,
Koog aan de Zaan,
the Netherlands
+31(0) 7565 321 11

Size equivalent to:



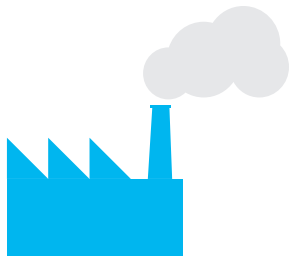
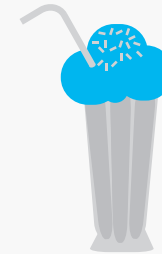
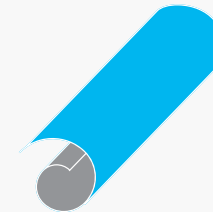
Production facility
Established 1876

Plant Manager: Paul Clarijs



INGREDIENTS PRODUCED

- CLARIA® Functional Clean-Label Starches
- PROMITOR® Soluble Fibre
- STA-LITE® Polydextrose
- MULTIVANTAGE® Syrup
- Starches for the paper and board industries



Tate & Lyle's oldest
starch production facility



employees



Delivered by barge for
processing



First

and only STA-LITE®
Polydextrose line in
Europe